

# DETECTAMET SK111



Start with box cutter SK111 horizontal to material. Puncture with hook blade.



Push down until front face of knife is in full contact against the box. At this point the Vari-Guard will be fully retracted, exposing the straight blade. Transfer all cutting force onto the straight blade.



Move knife along cutting line. As knife is removed from material, Vari-Guard will spring back into position, protecting user from any blade surface.

## STRAPPING

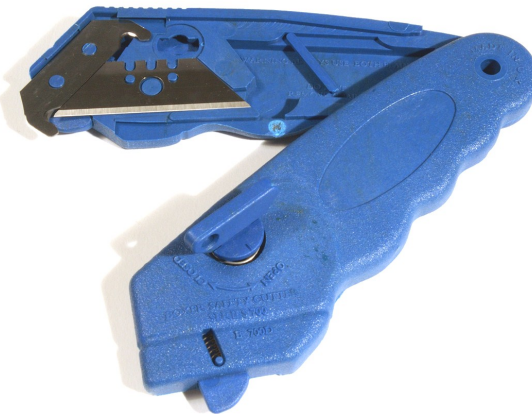
Cut conventionally on a diagonal across the strapping with the straight blade not the hook blade

## SHRINK WRAP

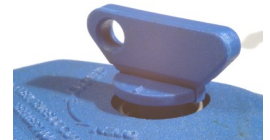
Cut at a side angle if tightly shrink wrapped to allow straight blade edge to maintain contact with the material

## BLADE CHANGE

1. Turn Button counter-clockwise until it pops up.
2. Swing open top section.
3. Reverse blades or replace with blades from storage pocket.
4. Swing shut.
5. Push button in and turn clockwise.



Security Key for controlled blade change



Please test detectable products with YOUR detection equipment prior to use

Available in: 

PLEASE PHOTOCOPY & ISSUE TO ALL OPERATORS



Unit 55 Halifax Way, Pocklington Industrial Estate  
Pocklington, York YO42 1NR  
Tel: 01759 304 200 [www.detectamet.com](http://www.detectamet.com)